

# Welcome

Encore at Avalon Park would like to welcome you home- to the community that combines the Art and Science of caring for seniors. We recognize that moving into assisted living can be a difficult decision and our goal is to make that transition very smooth. We appreciate your trust in our care and we are looking forward to a happy, healthy relationship!

In addition to your lifestyle at Encore, your family will be a part of the Avalon Park culture. We invite you to take part in all Avalon Park has to offer including our restaurants, shops and services. We have movies, music, art and several holiday themed festivals. There is always something going on here and plenty of things to do when family and friends come to visit. We anticipate having your family become a part of the extended Encore-Avalon family.

## *We Believe in the Value of Community.*



Assisted Living Facility #12618

13798 Cygnus Drive, Orlando, FL 32828

407.270.7500

[EncoreAtAvalonPark.com](http://EncoreAtAvalonPark.com)

# Community

*At Encore, companionship within a community is an essential ingredient for successful aging.*

Encore at Avalon Park is in the center of a community built on the rich traditions of small-town life. Tree-lined streets, lakes, shops, medical and professional services were designed to evoke an ideal small-town America.

Avalon Park is an 1,860 acre neighborhood located in southeast Orange County, nestled beside the serene, natural surroundings of the Econolockhatchee River.

Avalon Park 240 has acres of wetlands, 400 acres of upland preserve, 250 acres of man-made lakes, 16 miles of walking/biking trails, parks, community ball fields, and a pool with cabana located in the center of each neighborhood village.

Additionally, Encore at Avalon Park is located in the heart of Downtown Avalon Park, which boasts more than 90 shops, restaurants and professional services within a short walking distance. Encore residents will also be able to enjoy regular community events located just outside their front door.

Encore enjoys partnerships with community groups, such as Avalon Dance, Avalon Park YMCA, NeuroRestorative, and Florida Hospital, which allow us access to superior services and activities.

Phase one, which opened in fall 2014, is an 80,000 SF Assisted Living and Memory Care project. The plans call for 90 apartments, with the potential for 128 beds.

In the tradition of Downtown Avalon Park, this 3-story building is made up of 6 neighborhoods each with 15 apartments. Sixty total apartments will be dedicated to memory care and thirty units will be focused on assisted living. Each neighborhood has its own entry, dining room, living room, family room, porch, and spa access.

Additionally, the project consists of a community outreach room, outdoor plaza, wellness area, and an occupational and physical therapy facility. The building is centrally oriented around a secured landscape courtyard composed of fountains, trellis' and seating all under a canopy of oak trees.

Assisted Living Facility #12618





# *Believe*

## *The Art and Science of Caring for Seniors.*

### *Assisted Living (AL) and Memory Care*

*Therapeutic approach to behavioral and cognitive impairments utilizing validation therapy, alternative communication and pharmaceutical intervention.*

*Individualized programs based on a resident's health, skills, therapeutic goals and previous life experience.*

*Oversight of physical well-being by Florida Hospital Neuroscience Institute and Florida Hospital physician team.*

*Consistent monitoring of a resident's physical and emotional well-being with a holistic approach encompassing nutrition and physical activity.*

*Activities that correspond with a resident's abilities and talents with an appropriate level of social interaction and stimulation.*

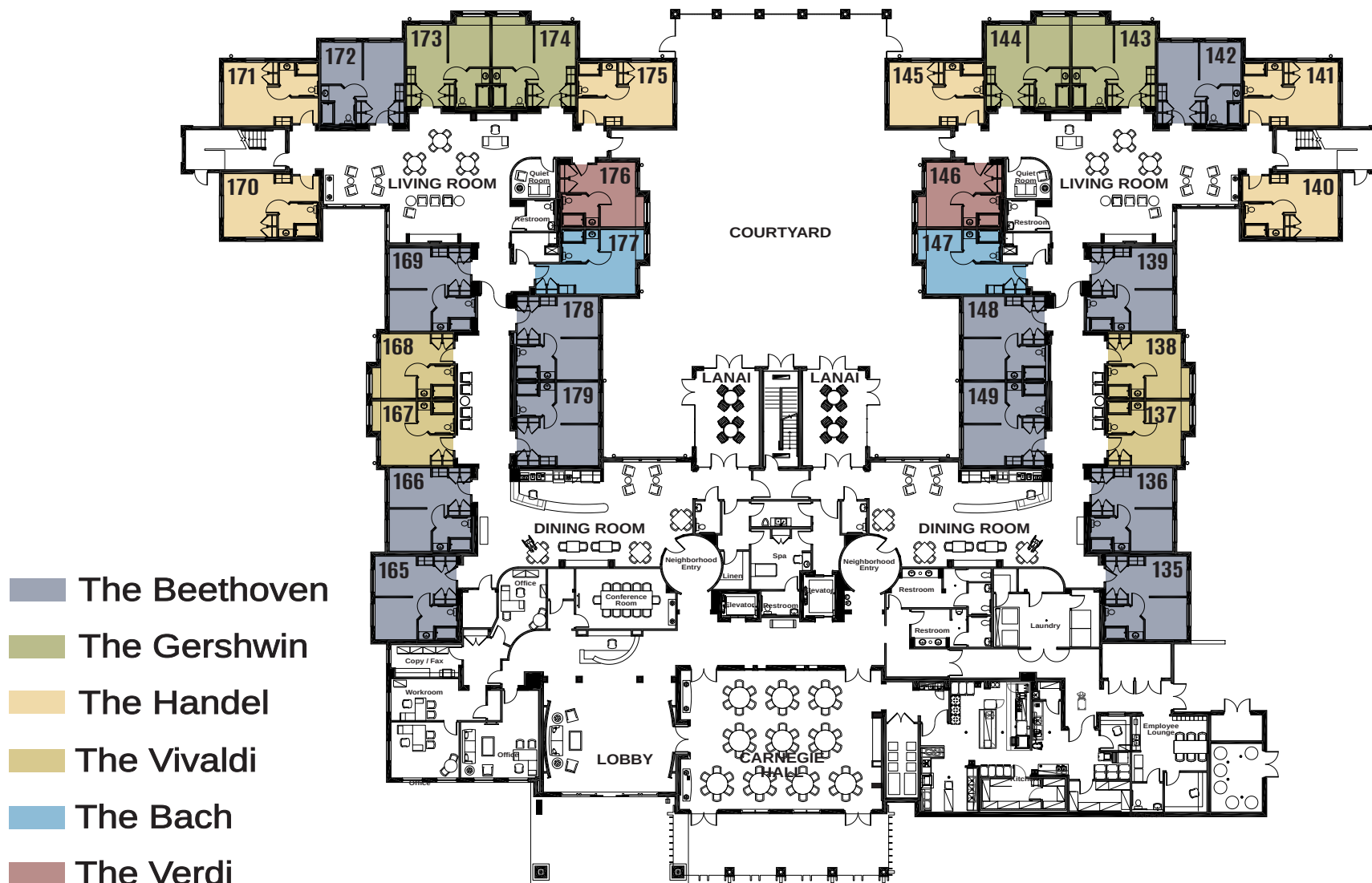
*Micro-environments (neighborhoods) that emphasize safety and familiarity while encouraging independence and dignity.*

*Comprehensive support and education program for families, including those dealing with advanced stages of Alzheimer's.*

*Understanding, Patience and Training.*

Assisted Living Facility #12618

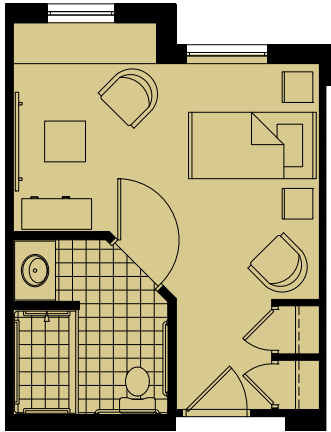
# FIRST FLOOR



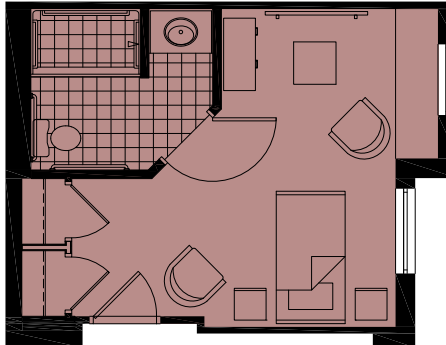
\*Plans subject to change at any time without notice.

Assisted Living License AL12618

**The Vivaldi**  
311 SF



**The Verdi**  
325 SF



**The Beethoven**  
423 SF



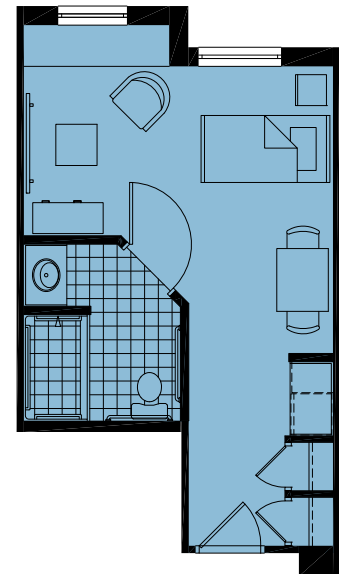
**The Gershwin**  
444 SF



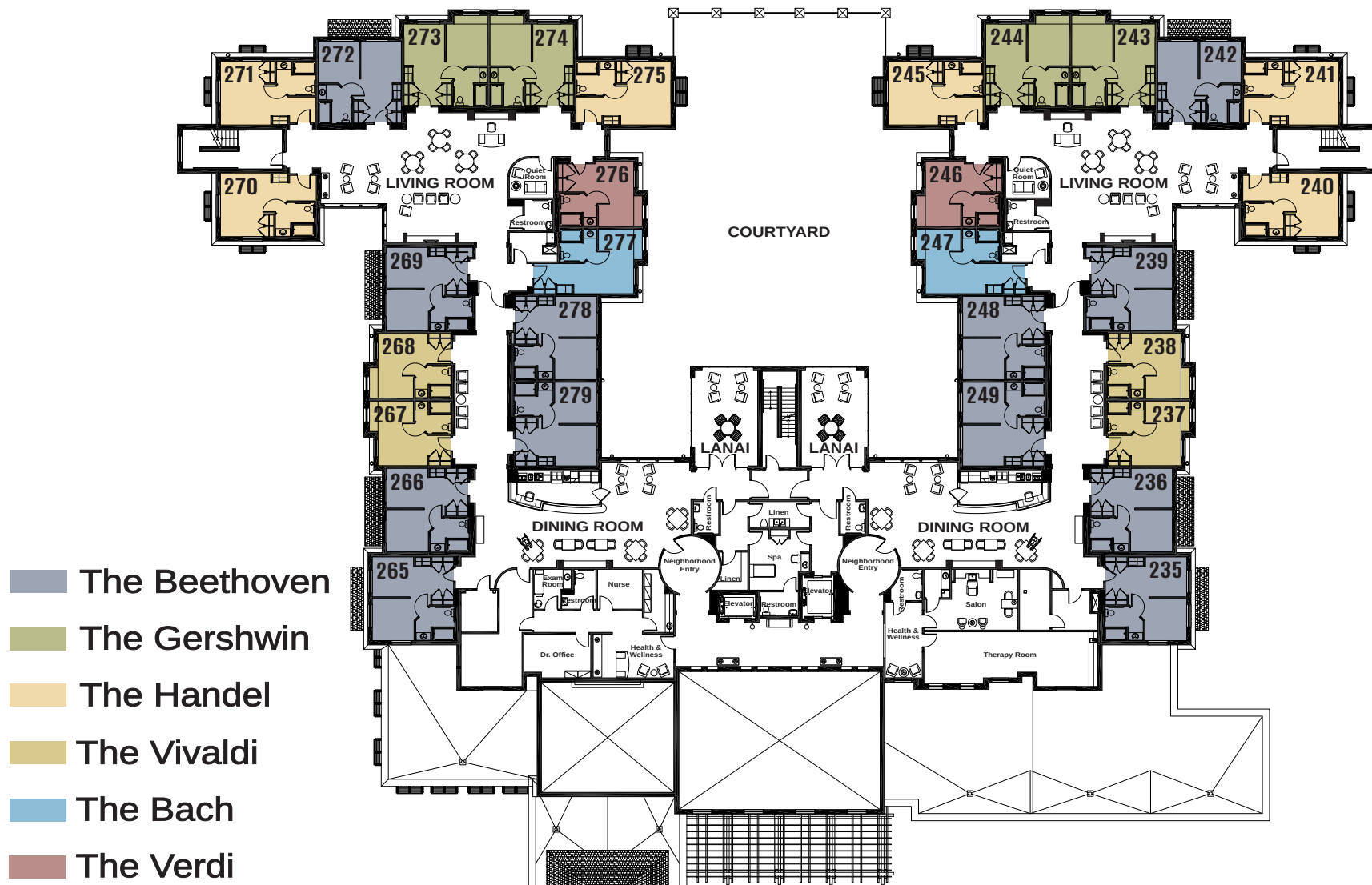
**The Handel**  
380 SF



**The Bach**  
358 SF



# SECOND FLOOR



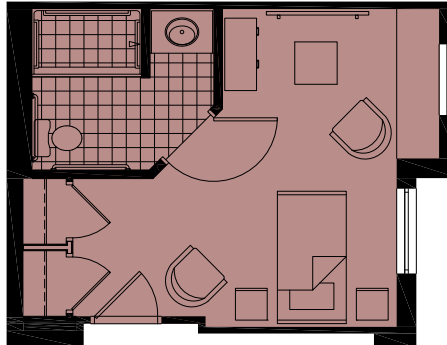
\*Plans subject to change at any time without notice.

Assisted Living License AL12618

**The Vivaldi**  
311 SF



**The Verdi**  
325 SF



**The Beethoven**  
423 SF



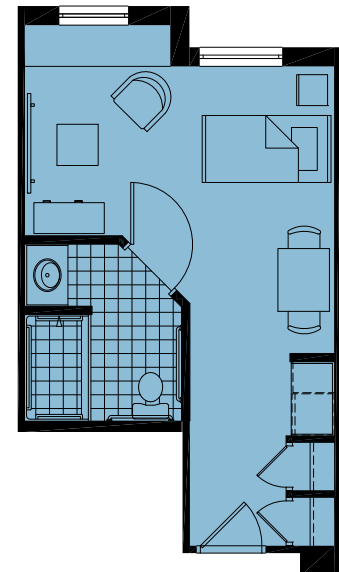
**The Gershwin**  
444 SF



**The Handel**  
380 SF

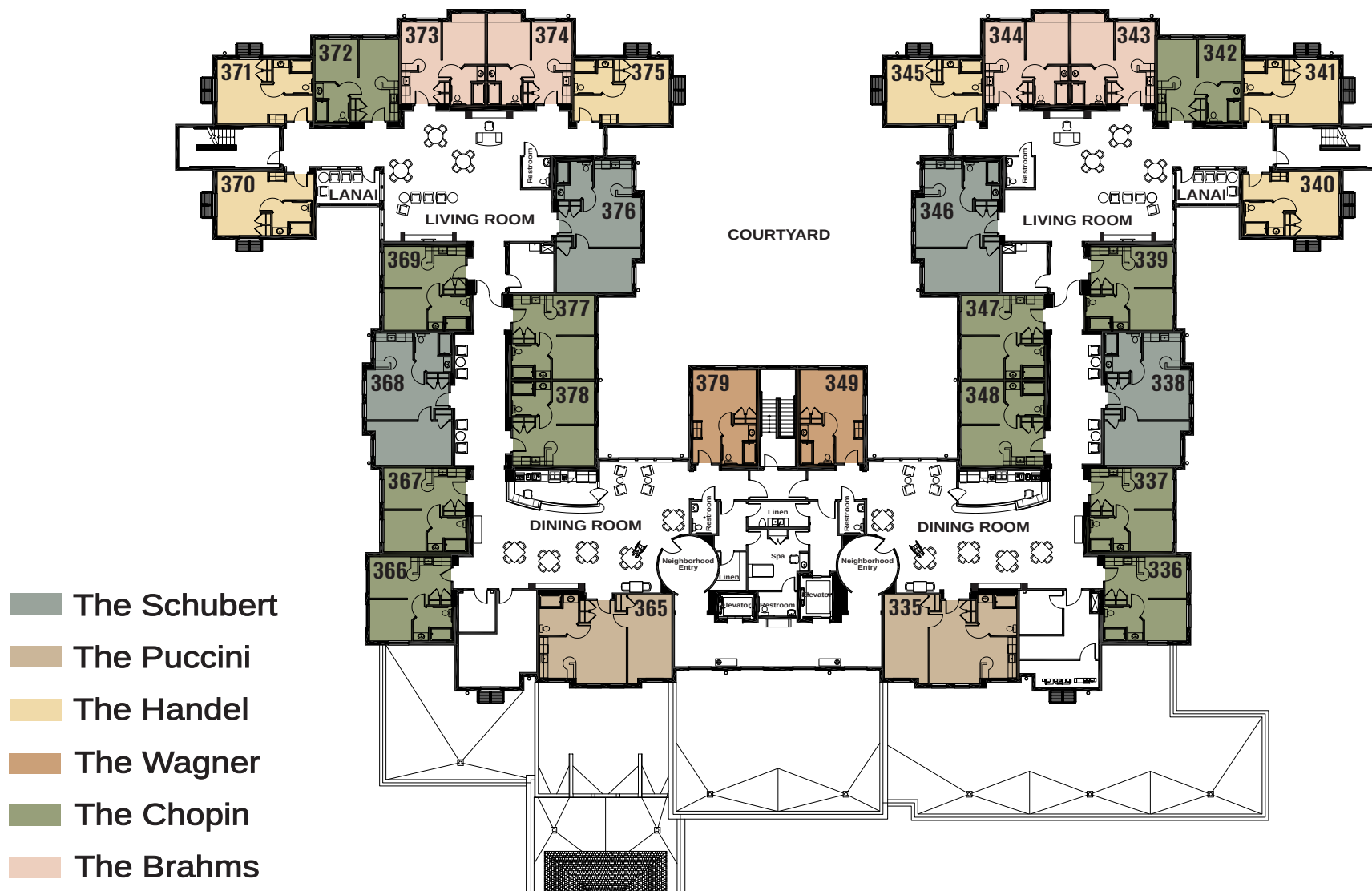


**The Bach**  
358 SF





# THIRD FLOOR



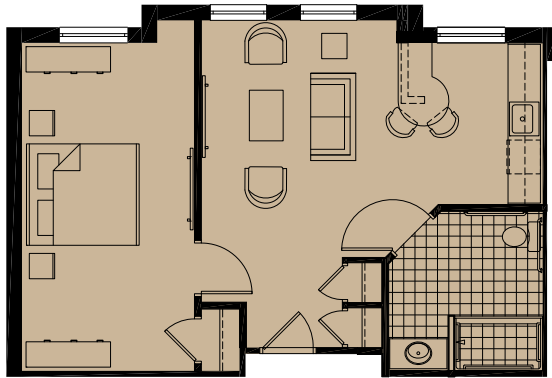
- The Schubert
- The Puccini
- The Handel
- The Wagner
- The Chopin
- The Brahms

\*Plans subject to change at any time without notice.

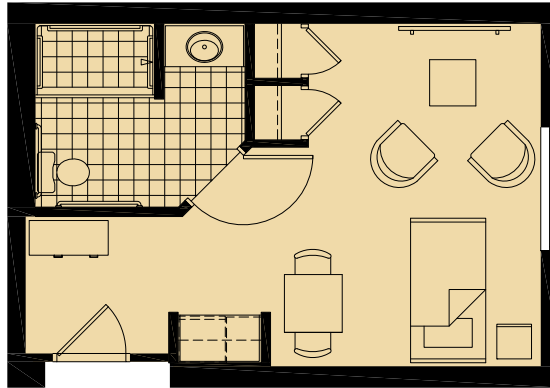
Assisted Living License AL12618



**The Puccini**  
640 SF



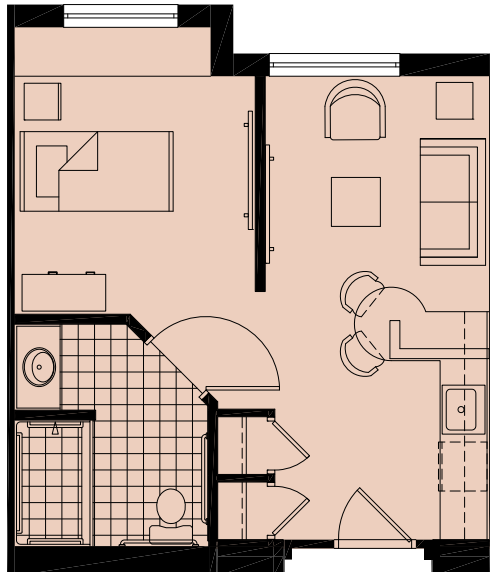
**The Handel**  
380 SF



**The Schubert**  
663 SF



**The Brahms**  
444 SF



**The Chopin**  
423 SF



**The Wagner**  
380 SF

